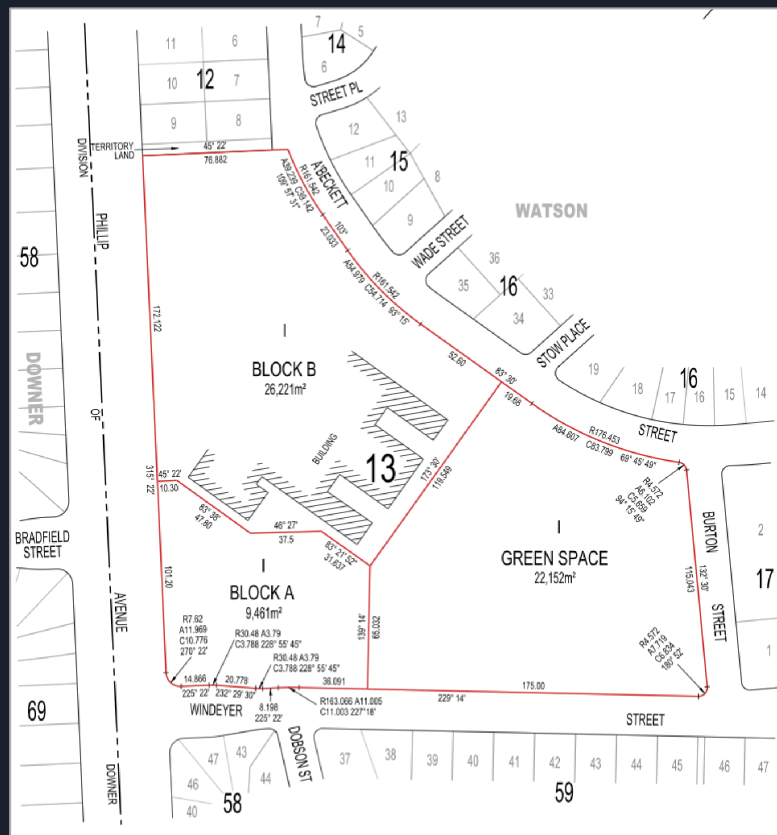


ACADEMY OF INTERACTIVE ENTERTAINMENT

AIE'S WATSON CAMPUS

Update on progress and next steps



CAMPUS RENEWAL UPDATE

30 November 2020

OVERVIEW

AIE INTRODUCTION

Campus Vision

Proposed Site

PROJECT UPDATE

Overview of Process to Establish Precinct Deed

Precinct Deed Requirements

Crown Lease Conditions

Site Description

AIE Campus Implementation Timeline

CONSULTATION OVERVIEW

Timeline

Process

Website

CAMPUS REQUIREMENTS

Campus requirements

Elements

NEXT STEPS

Questions

AIE INTRODUCTION

Presentation facilitator – Tania Parkes



AIE INTRODUCTION

The AIE

The Academy of Interactive Entertainment Limited (AIE) is the world's first non-profit specialist games and film educator. We invest in our students, grow the industry and support graduate career opportunities.

AIE's Vision

To be the premier 3D animation, visual effects, film and computer games educator in Australia and globally through the development of innovative courses and industry development.

AIE's Mission

To be a catalyst for building Australia's creative industry, by producing industry ready graduates through industry partnerships and the provision of world class 3D animation, visual effects, film and game development education.

AWARD-WINNING EDUCATION

WINNER



ACT TRAINING
AWARDS 2020

WINNER

ACT Small
Training Provider
of the Year

AIE INTRODUCTION

History of AIE

The AIE is one of Canberra's great success stories. The first course was run in 1996 with 10 students in partnership with the Canberra Institute of Technology (CIT) as a business unit within veteran computer game development studio Micro Forté Pty Ltd. The course was offered to address a shortage of trained 3D animators and artists in the game development sector, but its unique work integrated learning pedagogy resulted in massive expansion of games studios across Australia.

Globally, AIE now employs 198 full-time, part-time and casual staff, has over 1,308 current students, has issued approximately 11,000 nationally and internationally recognised qualifications (since 2003) and has led directly to the establishment of 114 Australian businesses.

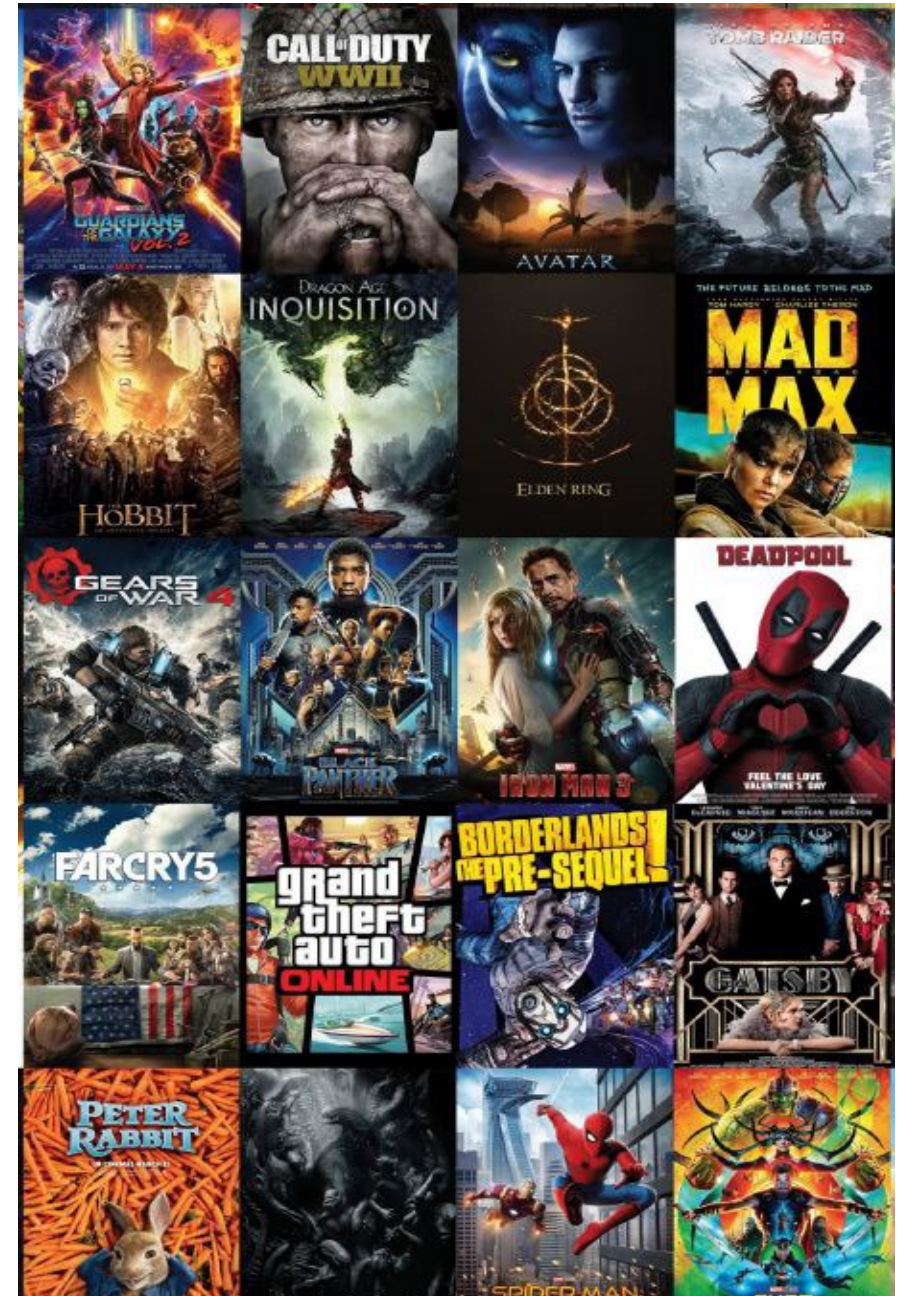
Canberra – Global Headquarters

AIE world-wide campuses and co-working spaces are administered from AIE's headquarters in Watson, Canberra.

AIE has campuses in Adelaide, Canberra, Sydney, Melbourne, Seattle, Lafayette and Online. AIE's Game Plus co-working spaces are in Canberra, Sydney, and Adelaide. Film Plus is unique to Canberra.

Game Plus is a collaborative workspace for game developers and related specialist technology start-ups. Film Plus is a collaborative workspace for filmmakers and related specialists and supports the needs of the Canberra film production industry. AIE Incubator supports graduates who have completed the Graduate Diploma in Management (Learning) to start-up commercial enterprises.

Both Game Plus and Film Plus offer significant work integrated learning outcomes resulting in graduates going straight into jobs.



AIE CAMPUS VISION

Vision

AIE's vision for the site is focused on supporting AIE graduates into meaningful employment opportunities and enterprise creation programs. The addition of associated student accommodation will enable future students to live, study and create on site.

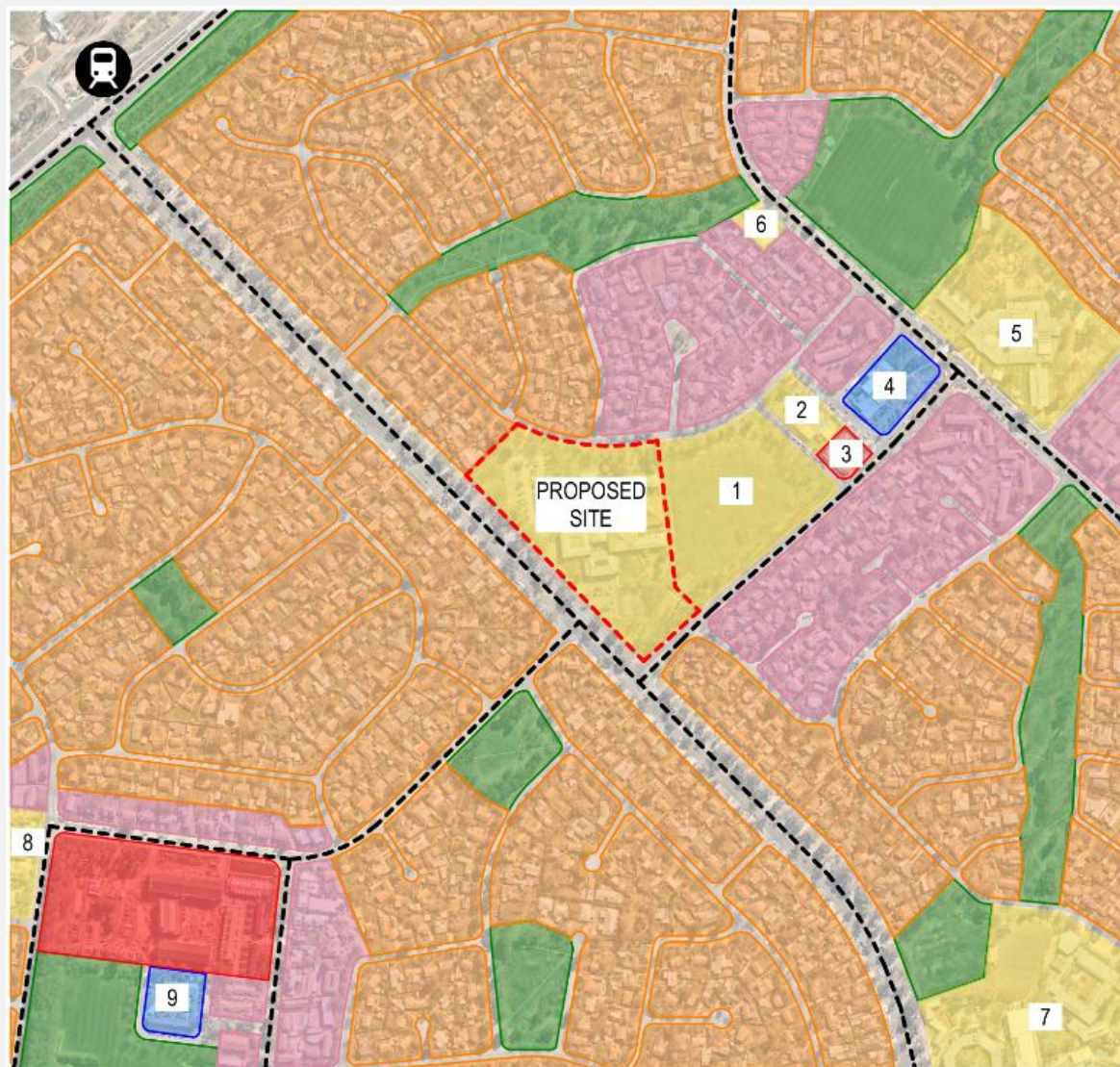
AIE's new global headquarters will feature enhanced teaching, learning, research and production facilities that are specifically focused on the interactive entertainment and film industries. Current vocational training will be expanded to include higher education degrees and master's courses through the establishment of AIE Institute.

The AIE is aiming to create a newly invigorated, purposeful, and contemporary Campus that is connected to the local community and environment.

PROPOSED SITE

Part of Block 1, Section 13, Watson

Watson is located in the Inner North of Canberra.



LEGEND

--- SITE BOUNDARY

--- SIGNIFICANT STREETS



LIGHT RAIL STOP

1. OPEN GREEN SPACE (ACT GOVERNMENT)
2. NIPPERVILLE EARLY LEARNING CENTRE
3. ALBERI RESIDENTIAL DEVELOPMENT
4. WATSON SHOPS
5. MAJURA PRIMARY SCHOOL
6. WATSON PRESCHOOL
7. AUSTRALIAN CATHOLIC UNIVERSITY
8. BRINDABELLA COURT & BARNARDOS FAMILY CENTRE
9. DOWNER VILLAGE

LAND USE ZONES:

CF - COMMUNITY FACILITIES

PRZ1 - URBAN OPEN SPACE

CZ4 - LOCAL CENTRE

RZ1 - SUBURBAN
- MAX 2 STOREYS (1 STOREY REAR DWELLINGS)
- MAX HEIGHT 8.5m
- TYPICAL 6m SETBACK

RZ2 - SUBURBAN CORE
- MAX 2 STOREYS
- MAX HEIGHT 9.5m
- UNIT TITLING, SUBDIVISION AND CONSOLIDATION PERMITTED
- TYPICAL 6m SETBACK

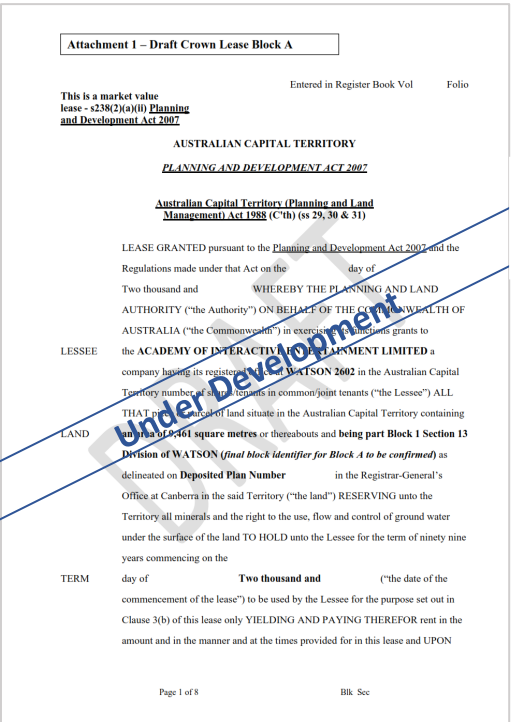
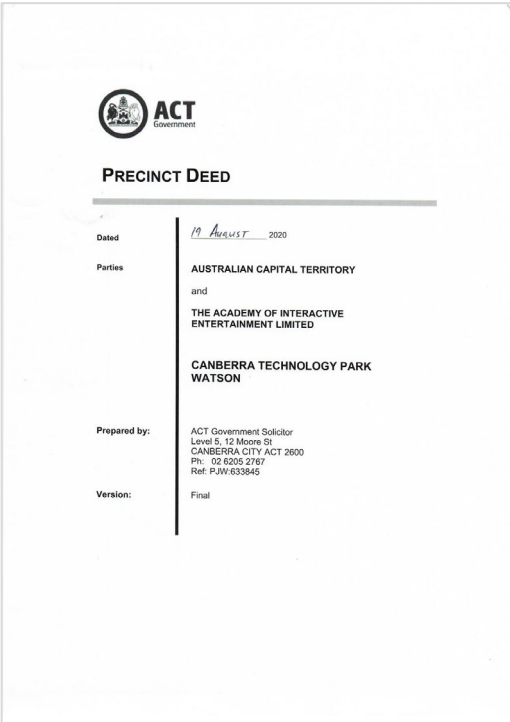
RZ4 - URBAN MEDIUM RISE RESIDENTIAL
- 3 STOREYS
- MAX HEIGHT 12.5m
- APARTMENTS PERMITTED
- UNIT TITLING, SUBDIVISION AND CONSOLIDATION PERMITTED
- TYPICAL 6m SETBACK

RZ5 - HIGH DENSITY RESIDENTIAL
- 6 STOREYS PLUS AREA SPECIFIC PROVISIONS
- MAX HEIGHT 21.5m
- APARTMENTS PERMITTED
- UNIT TITLING, SUBDIVISION AND CONSOLIDATION PERMITTED
- TYPICAL 6m SETBACK

PRECINCT DEED

OVERVIEW OF PROCESS TO ESTABLISH PRECINCT DEED

Following on from the release of the ACT Government’s Final Report, AIE entered into a Precinct Deed with the Territory. The purpose of the Precinct Deed is to establish a Future Intentions Plan to inform the direct sale process of land contained within Block 1 Section 13, Watson.



Current Status : Precinct Deed

Process

Goal

AIE COMMUNITY CONSULTATION
PRESENTATION – 30TH OF
NOVEMBER 2020

PRECINCT DEED REQUIREMENTS

Future Intentions Plan

AIE is to develop a Future Intentions Plan (FIP). The FIP must describe the development to be carried out on the site. This will include the identification of building use, building scale and the staging for implementation. In addition the FIP will establish the framework within the campus for public open space, landscape character, ground plane activation, pedestrian and vehicular movement.

Upon Approval by the Territory the FIP will :

- form the basis to enable the direct sale process of the land.
- form the guiding document to which AIE submits future Development Applications for the site.

Demolition

The ACT Government will demolish the existing buildings and remediate the site. The demolition and remediation is required due to the building containing loose fill asbestos.

Block Parcels

AIE is to develop the site across two future land parcels Block A and Block B. The FIP is to indicate the development proposed on Block A and Block B of the site.

- Block A is approximately 9,461m².
- Block B is approximately 26,221m².
- The Green Space is approximately 22,152m².



CROWN LEASE CONDITIONS

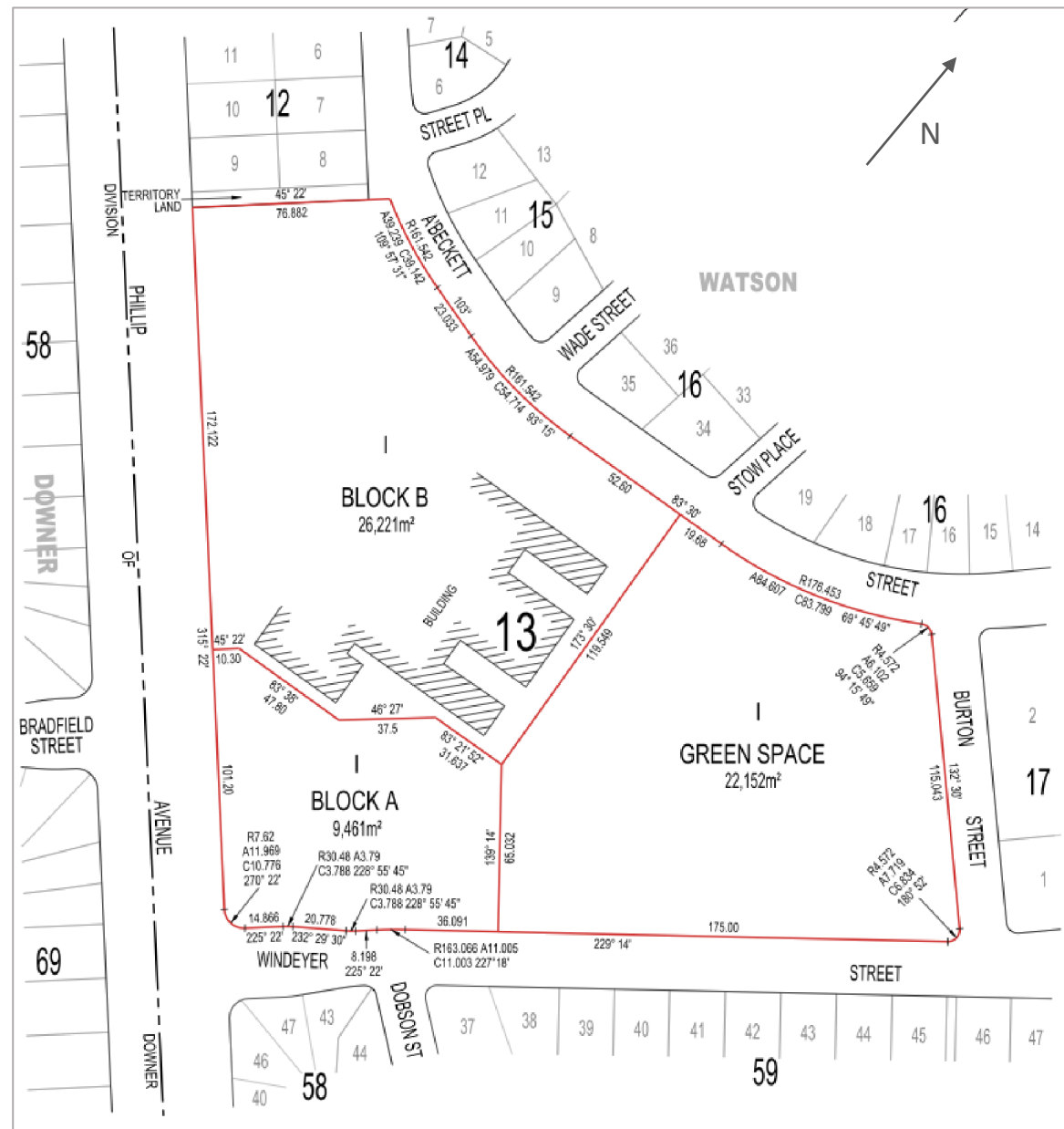
Crown Lease Conditions

The Precinct Deed contains proposed Crown Lease conditions.

The proposed development will consist of an educational establishment including ancillary uses and residential accommodation (student accommodation).

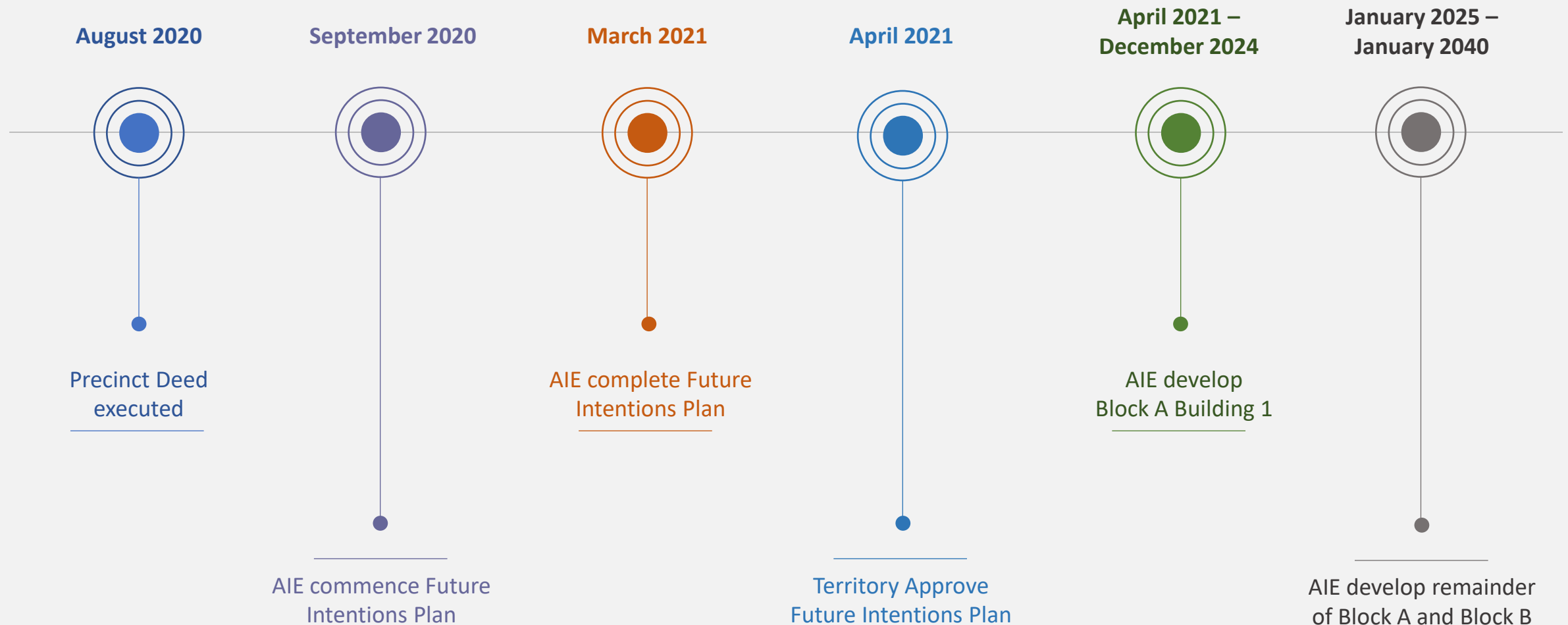
Public open space to be retained by ACT Government

The ACT Government is retaining approximately 22,152m² of land to the north east of the site to be retained for public open space. The ACT Government is currently preparing concept designs for the site to commence public consultation.



AIE CAMPUS IMPLEMENTATION TIMELINE

The Precinct Deed identifies the key milestones for the development of the AIE campus. These are:

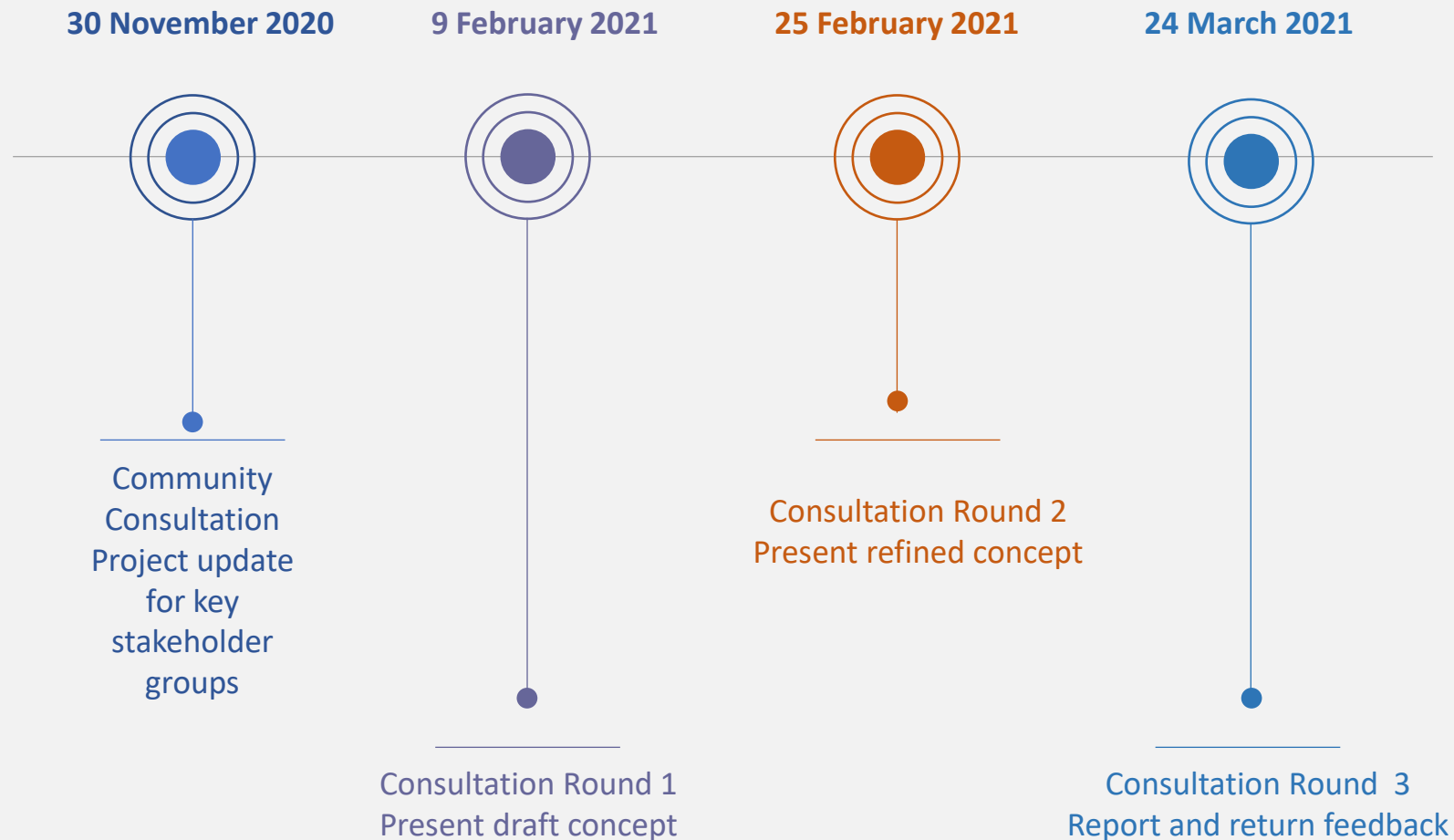


CONSULTATION OVERVIEW



AIE CAMPUS COMMUNITY CONSULTATION TIMELINE

The proposed community consultation rounds will enable AIE to incorporate community feedback into the Future Intentions Plan. Further consultation (after the FIP) will be consistent with statutory requirements for pre DA consultations.



COMMUNITY CONSULTATION PROCESS

Engagement approach and program

- Establish website with critical information
- Contact with key stakeholders and neighbouring property owners
- Invitations to stakeholders, neighbours and residents within a 2km radius inviting participation
- Six-week consultation approach
- Series of stakeholder presentations/workshops
- Consideration of feedback and revisions to the FIP
- Report on how stakeholder and community views have contributed to refining the proposal.
- Further consultation as part of all future stages.



Consultation

We are developing a Future Intentions Plan (FIP) before preparing any detailed plans or development applications (DA). This means we will consult with you again on our detailed development proposals in accordance with the ACT Government's pre-DA community consultation processes and other statutory DA processes.

COMMUNITY CONSULTATION WEBSITE

Up to date information

Information to further inform our community consultation program will be released on this site as it becomes available.

<https://community.aie.edu.au/>

Subscribe to receive updates

Visit the contact page and fill in your details to keep informed.



The Academy of Interactive Entertainment's WATSON CAMPUS RENEWAL

After first consulting with the community in February 2018 regarding possible future site uses, the ACT Government in August 2020 agreed to the terms for a direct sale of part of Block 1, Section 13, Watson to the non-profit Academy of Interactive Entertainment Limited (AIE).

Read the ACT Government's media release - [Supporting local jobs, education and innovation through AIE Agreement](#)

Community engagement

The Campus development will be staged over a 20-year period to 2040. This is where you can learn about our future development plans and participate in our program that is focused on listening to your feedback to improve our design outcomes and developing a Future Intentions Plan (FIP) that supports the long-term evolution of the site.

CAMPUS REQUIREMENTS

CAMPUS REQUIREMENTS

BLOCK A COMPONENTS

- *Initial Decant Building (first education building)
- Student Accommodation (1st block)
- Student Production Hall 1 (small) with associated production facilities

BLOCK B COMPONENTS

- Student Production Hall 2 (large) with associated workshop and production facilities
- *Education building expansion 1
- *Education building expansion 2
- *Education building expansion 3
- Outdoor filming tank 'water studio'
- Remainder of Student Accommodation

*Note: Education buildings include a mix of AIE, AIE Institute, Game Plus, Film Plus and future School of Cinematic Arts.



CAMPUS ELEMENTS

Key areas of focus

Key elements AIE will be considering include:

- Tree preservation
- Pedestrian and traffic access and movements including parking
- The function of the site as a destination in a suburban context and how its use fits with Canberra's broader education and arts community
- The need to ensure integration with the green space design being undertaken by the ACT Government.
- We will be consistent with existing planning constraints and a maximum of 4 storeys.

NEXT STEPS

The AIE recognises this project update is the initial step in preparation for a more detailed community consultation program commencing in February 2021.

Questions?